



Bovine reproduction technologies



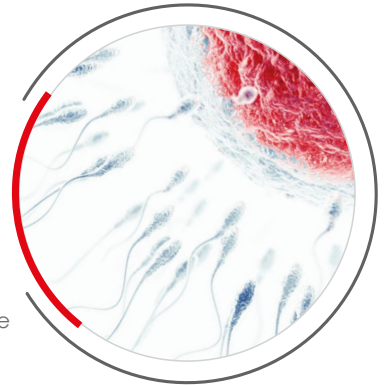
IMV TECHNOLOGIES. FOR LIFE.

INNOVATION. FOR LIFE.

In 1963, Robert Cassou founded IMV Technologies and set the standard for semen storage and insemination with the revolutionary «French Straw».

Since then, we've approached every new solution with the same innovative spirit as he did.

Today, we are still leaders in applied and disruptive technologies. We not only make things; we also improve things that already exist.



TECHNOLOGY. FOR LIFE.

Curiosity is one of our main drivers. We're never satisfied with the status quo. From semen collection to wireless ultrasound, this philosophy is why our technology is accepted and relied upon around the world.

Beyond technology, we create state-of-the-art techniques and programs to support its implementation.

SUSTAINABILITY. FOR LIFE.

Life is nothing without the planet we call home. That's why in everything we do, we push to implement sustainable practices that minimize our carbon footprint. It's not just our stated corporate responsibility. It is our life.

We challenge ourselves with new thinking that drives toward sustainable food sources for future generations. Through the use of our technologies, we believe land resources can be more efficiently managed and agriculture can become more sustainable. We aim to preserve Earth's abundance and beauty.

We have a genuine desire to make a positive impact.

REPRODUCTION. FOR LIFE.

For over 60 years, we've been at the leading edge of artificial insemination technology.

Over time, we've evolved to become more than an artificial insemination company. Our reproductive biotechnologies, which have become the standard across the globe, touch every aspect of reproduction, including collecting gametes, confirming pregnancy and managing data.

With an exponentially growing population, abundant and sustainable food sources are critical. Our technologies make this possible. This notion is a driving force behind IMV Technologies.



Bovine reproduction technologies

IMV Technologies embodies half a century of innovation in artificial insemination in cattle.

Each year, more than 100 million cows are bred using IMV Technologies bovine artificial insemination products, across more than 150 countries.

Today, we are more determined than ever to manufacture and deliver cutting-edge products, services, and technical innovations to help industry artificial insemination technicians, and other breeders, improve their performance and facilitate regulatory compliance.

We provide professionals in the bovine industry with products for:

- Artificial insemination of cattle with frozen semen
- Artificial insemination of cattle with fresh semen
- Embryo transfer



Discover our full range of products for semen production centers, AI technicians, veterinarians and for cattle farmers.

Contents

Preliminary diagnosis 4

 Veterinary imaging..... 4

 Protection 7

Semen collection & analysis..... 11

 Semen collection 11

 Semen analysis 12

Semen preparation & packaging 17

 Semen preparation 17

 Semen traceability 21

 Semen packaging 23

 Semen freezing 30

 Semen storage 32

Insemination & reproduction follow-up 37

 Semen thawing 37

 Insemination 38

 Veterinary imaging..... 41

 Protection 44

Field application & Training 47

Service 48



ExaPad range

Our full ExaPad range is designed with the mixed practice vet in mind suitable for both routine work and advanced applications.

Key benefits

ExaPad

Seamlessly switch between applications with 2 probe connectors

- Large imaging viewing area
- Excellent image quality with 192 element probes available for high quality diagnostics

ExaPad Mini

- Suitable for in practice or in field use
- Excellent imaging for OPU application
- Software integrations with MeatQText and EcoText

ExaPad Micro

- Compact and portable scanner
- Purposely designed accessories to support you in any use-case
- Ruggedised machine with magnesium casing and veterinary tested probes

Applications

- Abdominal
- Musculoskeletal
- Gynecologic
- OPU

Related features

Teamviewer: Equipped with Teamviewer to allow for remote support on the device. Allowing you to have access to technical and clinical experts should you have any difficulty whilst imaging

CFM (Colour Flow Mapping) for:

- Negative pregnancy diagnosis between 18 and 23 days post AI
- Foetus viability confirmation (heart – cotyledons)
- Recipients cows for embryo transfer purpose

Compatibility software: (for ExaPad and ExaPad Mini)

- ECOTEXT: tool to predict young bulls' fertility
- MEATQTEXT: to assess meat quality on live animals

References

90-3346KIT - ExaPad Veterinary ultrasound scanner

90-2440KIT - ExaPad Mini veterinary ultrasound scanner

903188 - ExaPad Micro veterinary ultrasound scanner

ExaPad range

Probe compatibility

Product	ExaPad	Mini	Micro
 LR760V - Linear Rectal	X	X	X
 CRV460V - Curved rectal probe	X	X	X
 L738V- Linear Tendon	X	X	X
 C360S - Convex	X	X	X
 L3180B - Bovine Backfat	X	X	X
 OPU E610B - OPU, thin probe	X	X	X
 OPU E614B - OPU, thicker probe	X	X	X
 C614P - Micro-convex probe	X	X	X
 P320R - Phased array probe	X	X	
 P713R - Phased array probe	X	X	
 CC717B - Micro-convex probe	X		
 CC550V - Convex probe	X		
 LC1038V - Linear probe	X		
 LC1428V - Linear probe	X		

Specifications

	ExaPad	ExaPad Mini	ExaPad Micro
Console form	Touchscreen		
Probe connectors	2	1	1
Screen size	14 inches	12 inches	10 inches
Optional trolley	Yes	Yes	No
Battery life	60 mins	90 mins	90 mins
Optional external charger	No	No	Yes
Built in stand	Yes	Yes	No
Optional stand	No	No	Yes
Weight	6kg	4kg	2kg
Height	300mm	250mm	200mm
Width	390mm	320mm	280mm
Depth	70mm	58mm	55mm
Warranty	2 years		
Colour Doppler	Yes	Yes	Yes
Pulse wave doppler	Yes	Yes	Yes
Continuous wave doppler	Yes	Yes	No
ECG	Yes	No	No



Easi-Scan:Go range

Fast, light and with minimal set-up time required, the Easi-Scan:Go is ready to go when you are, providing speedy results without sacrificing accuracy. Biosecurity is not an issue as the scanner is waterproof and completely sealed. This contributes to an even more efficient workflow on the farm.



References

ESG-SCANNER-L – Easi-Scan:Go Linear

ESG-SCANNER -C – Easi-Scan:Go Curve

ESG-LITE-SCANNER-L – Easi-Scan:Go Lite Linear

ESG-LITE-SCANNER-C – Easi-Scan:Go Lite Curve

Key benefits

Easi-Scan:Go Linear and Curve

- Fully sealed unit ensuring waterproof to IP67 standard
- Exceptional image quality allowing for full fertility examinations as well as non-reproductive applications such as teat scanning, lung scanning, uterine scanning, post-calving examinations and body condition assessment
- Connection with Farm Management systems to allow full picture of cow health displayed on the ultrasound image. KPI detail such as age, last inseminated, milk yield can all be visible for each individual cow. (restrictions apply)
- Connect up to 3 smart devices or BUG:Go to view the image simultaneously
- Weighs only 850 grams and can be securely attached to a belt
- Images and clips saved directly on your phone or tablet

Applications

- Abdominal
- Gynecologic

Related features

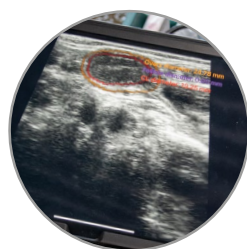
CFM (Colour Flow Mapping) exclusive to Easi-Scan:Go

- Negative pregnancy diagnosis between 18 and 23 days post AI
- Foetus viability confirmation (heart – cotyledons)
- Recipients cows for embryo transfer purpose

BovIntel

Ultrasound reimaged. Bringing fertility into focus for conception rate success. The future starts here.

BovIntel



Key benefits

Our revolutionary new technology takes fertility scanning to the next level to improve dairy herd performance.

As you scan it will automatically

- **Identify** the ovary, Corpus Luteum and follicle on an ultrasound image
- Highlight and label them **in colour** on your tablet or BUG:Go screen
- Take and display precise **measurements** – to the nearest mm
- All without interrupting your workflow, in fact, it could speed up the scanning process **by up to 3 times**
- Exclusive to the Easi-Scan:Go



Shoulder protect gloves

Glove for total protection of the shoulder, neck, and armpit.
Thickness 30µ

References

029185 - Red shoulder protection glove



Calving gown

With its long fitted sleeves and back cutouts, this gown is designed to be very strong and offer good protection. Available in two lengths.

References

Green :	Clear:
024265 - 140cm	025588 - 140cm
024263 - 155cm	025586 - 155cm



Overboot

Polyethylene overboots with 43x53 cm double elastics for heavy-duty use.

References

024242 - Overboot





Super sensitive glove

A silky copolymer, full-length glove with excellent tactile sensitivity. Preferred for high accuracy tasks such as reproduction ultrasonography.

Thickness 24 μ

References

024761 - Super-sensitive clear glove with grip attachment 1M



Vetorange range



Vetorange Soft:

Precision and durability meet in Vetorange Soft gloves, offering heightened sensitivity for delicate veterinary procedures, ensuring reliable performance for professionals who prioritize both precision and durability.

Thickness 24 μ - 92 cm - Size L

Vetorange Plus:

Vetorange Plus gloves provide exceptional resilience with a secure neck attachment, ensuring optimal glove retention during veterinary procedures, making them a reliable choice for high-performance tasks.

Thickness 30 μ - 100 cm - Size L

Vetorange Classic:

Balancing sensitivity and durability, Vetorange Classic gloves are versatile, offering robust resistance for everyday veterinary tasks, catering to diverse needs with reliable performance.

Thickness 28,5 μ - 92 cm - Size L

References

024194 - Vetorange

027976 - Vetorange Plus

024197 - Vetorange soft





8 Seven O Glove



This cost-effective glove is ideal for inseminations, ultrasounds or any procedure needing a precise touch. 8 Seven O Glove is a perfect compromise between strength and sensitivity and offers good value for the money.

Thickness 33 μ



References

024248 - 8 Seven O clear glove 87cm - Size L

Polytactyl



This strong glove is intended for long, difficult procedures encountered by veterinarians. Available in four sizes.

Ideal for ultrasound scans.

Thickness 33 μ



References

- 027920 - Polytactyl Yellow Glove 92 cm - Size S
- 024228 - Polytactyl Yellow Glove 100 cm - Size M
- 024225 - Polytactyl Yellow Glove 92 cm - Size L
- 027921 - Polytactyl Yellow Glove 100 cm - Size XL

Copolymere



Perfectly designed for procedures requiring an excellent tactile touch and perfect accuracy (ultrasounds, palpitations, etc.).

Thickness 23 μ



References

- 027817 - Copolymere Clear glove 100 cm - with removable strip - Size S
- 024185 - Copolymere Clear glove 100 cm - with removable strip - Size M
- 024183 - Copolymere Clear glove 100 cm - with removable strip - Size L
- 027922 - Copolymere Clear glove 100 cm - with removable strip - Size XL

Polyver



This glove is the thickest in the Polysem line. Ideal for long, difficult procedures, such as dystocia and embryotomies. It offers the highest level of resistance against tearing and limits odors.

Thickness 36 μ

References

024256 - Polyver green glove 92 cm - Size L



Ecosensitiv



This polyethylene glove is the most cost-effective veterinary glove. Suitable for bovine and equine exams (ultrasounds, embryo collections, etc).

Thickness 27 μ

References

024187 - Ecosensitiv red glove 92cm - Size L



eSmile

A user-friendly laboratory management software which links all aspects of semen traceability and semen processing.



References

026850 - eSmile identification

Key benefits

- Full traceability of male production
- Enhances productivity levels
- Multisite connectivity with automatic synchronization
- Fully automated data upload to minimize human entry
- Versatile Microsoft R SQL-based database
- Simplified in-house report management
- Generation of barcodes labels during each step of production
- Connectivity of all laboratory equipment and peripherals to eSmile
- Optional veterinary module: Veterinary task and history / Follow-up and reminder

Related products

027153 - Complete dilution system

024911 - IVOS II

Accessories

022318 - Electronic tags

028777 - RFID tag and chip reader

023946 - eSmile display panel

Bovine artificial vagina

This vagina is designed to ensure the comfort of both the bull and the operator during semen collection.



References

005417 - Bovine artificial vagina

Key benefits

- Unbreakable
- Comfort for the bull
- Safe process resulting in higher quality semen

Related products

023917 - B-tube

024372 - Sensitive glove

024504 - Dry water-bath

025993 - 235 mm alcohol thermometer -10 / +110

024930-024932 -024933 - Stainless Steel incubator 30-70°C

Accessories

005332 - Rough neoprene liner

026541 - Rough latex liner

026647 - Smooth latex liner

005204 - Silicone cone for bovine vagina

017693 - Disposable collection tube 15 ml

005415 - Silicone stopper for 15 mL collection tube

005351 - Reusable collection tube 15 ml

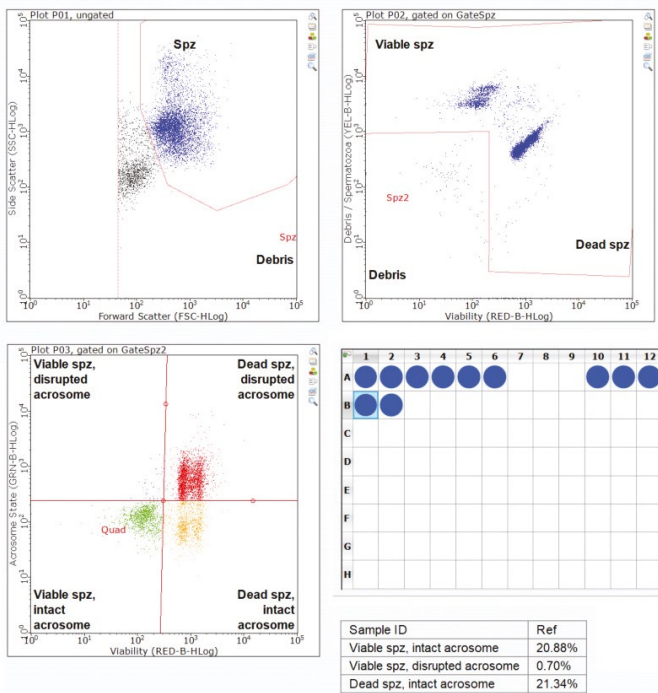
005347 - Protective felt cover for collection tube

005346 - Protective felt cover for bovine vagina

EasyCyte

Thanks to its innovating patented microcapillary system, EasyCyte is easier to use than traditional flow cytometers and reduces the size of the samples and and the space needed

EasyKit Viability and Assess Membrane



References

- 022841 - EasyCyte II Plus with IMV software
- 022843 - EasyCyte II Mini and IMV software

Related products

- 021776 - P2 pipette (0,2 to 2µl)
- 021777 - Tips for P2 pipette
- 005555 - Carousel stand for pipettes
- 020101 - Tips for micropipette MP50
- 005928 - Adjustable micropipette 5/50 µl
- 020100 - Filters for MP5000
- 005206 - Translucid tips for pipette type P5000
- 005529 - P5000 pipette (1 to 5 mL)
- 005531 - P200 pipette (50 to 200 µl)
- 005208 - Translucid tips for pipette P200
- 005530 - P20 Pipette (2 to 20 µl)

Key benefits

- IMV unique ready-to-use device dedicated to semen analysis
- Intuitive software package for semen analysis
- Scientific technical support
- Easy-to-use technology
- EasyKit: ready-to-use flow cytometry assays for time-saving and repeatable results

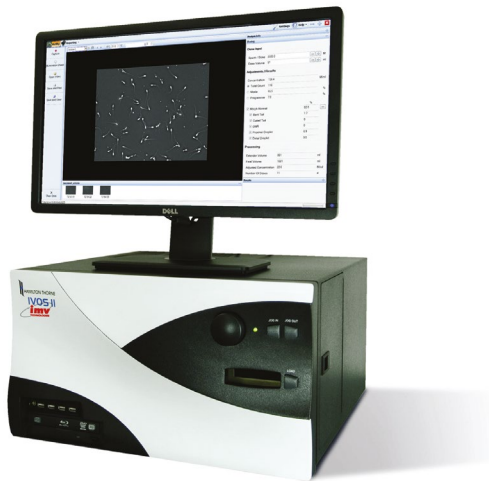


Accessories

- 021775 - Micropipette container
- 021774 - Tips for multichannel pipette
- 021773 - Multichannel pipette
- 021768 - 1.5 ml microtubes
- 021771 - 500 µL microtubes
- 021772 - Greiner plate with 96 wells
- 022845 - «Flow Cell» capillary for EasyCyte II Plus
- 022846 - «Flow Cell» capillary for EasyCyte II Mini
- 021767 - «Flow Cell» Washing kit
- 025438 - EasyBuffer C
- 023862 - EasyBuffer B
- 024760 - EasyClean
- 023066 - EasyCyte Check Kit
- 025293 - Easykit - acrosome integrity and viability
- 025157 - EasyKit - Molecule D oxidation
- 024708 - EasyKit - Viability and concentration
- 025402 - EasyKit - Bacterial concentration
- 024864 - EasyKit - Mitochondrial activity

IVOS II

IVOS II is an integrated system for animal semen analysis, for both dose production and quality control evaluation.



References

- 024911 - IVOS II
- 028506 - IVOS II Ident (fluorescence)

Accessories

- 025097 - Barcode reader for IVOS II
- 022375 - HTB electronic scale for IVOS II
- 025456 - Viability software
- 025454 - Subpopulation creation software
- 025455 - Individual track data software
- 023724 - Microlab 600 dilutor
- 006452 - Mini pipette for semen sampling
- 018441 - IDENT stain kit
- 018632 - Viability stain kit
- 028499 - HT morph for IVOS II
- 028504 - DNA fragmentation software
- 028503 - HTB filter for DNA fragmentation
- 028502 - HTB stain kit Halomax DNA fragmentation
- 028501 - Objective 20X for DNA fragmentation
- 028505 - HTB stain kit DNA fragmentation

Key benefits

Quick and ease of use:

- «All-in-one» enclosed system
- Standardized procedures thanks to Leja slides
- Powerful and intuitive - highly configurable, automated heating stage
- Real-time data updating

Optimizes productivity and dose quality:

- Optimization of number of doses produced
- Automated morphology analyses
- Decision aid tool
- Data management and traceability
- Fluorescent capabilities

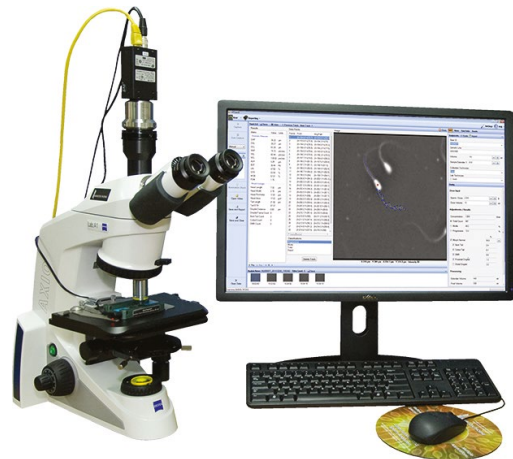


Related products

- 025107 - 025108 - Leja slides - 20 µm
- 005530 - P20 Pipette (2 to 20 µl)
- 005208 - Translucid tips for pipette P200
- 005531 - P200 pipette (50 to 200 µl)
- 028877 - Boxes of 96 tips for P20 P200
- 028880 - P1000 pipette (100 to 1000 µl)
- 028878 - Boxes of 96 tips for P1000
- 028879 - Tips for Pipette P1000 (X1000)
- 005529 - P5000 pipette (1 to 5 mL)
- 005206 - Translucid tips for pipette type P5000
- 023639 - Multi pipette plus
- 023640 - Combitips for Multipipette
- 024504 - Dry water bath
- 021922 - Accu-beads - fluide de morphologie pour IVOS
- 023940 - Histology warming plate 12 holes
- 023941 - Histology warming plate 40 holes
- 023862 - EasyBuffer B

CEROS II

Providing the same semen analysis accuracy as the IVOS II, the CEROS II CASA system is a cost-effective, space-saving alternative. Because the CEROS II processor is a separate unit from the optical component, the computer can be placed under the bench and at a distance.



References

024905 - CEROS II

Accessories

025454 - Subpopulation creation
025455 - Individual track data
023724 - Microlab 600 dilutor
026691 - Footswitch for Ceros II
Pipettes and consumables: refer to page12

Trinocular Microscope

Microscopic analysis is the first step in semen analysis. With a microscope, laboratories can analyze gross and individual motility. All microscope are with heating stage.



References

023939 - Binocular microscope with phase contrast
024374 - Trinocular Microscope - NIKON with phase contrast and Lens plan

Accessories

016513 - 36 cm monitor with color camera
019171 - Plan achromatic objective 100X
005671 - Hand counter
005786 - Thoma cell
020105 - Flat slides 22 x 22 mm (20)
005795 - Slides 76X26
005760 - Cover slides 22X22
006557 - Slides 18X18

AccuCell photometer

Tool developed specifically for accurate measurement of ejaculate concentration.

Several modes:

- concentration
- concentration, calculation of the volume of media and the number of doses
- quality control with filter standards



References

- 014475 - With no diluter or printer
- 023729 - With diluter and printer

Accessories

- 014441 - Printer with a cable for Accucell photometer
- 006452 - Mini pipette for semen sampling
- 005378 - Photometer printer paper roll
- 015988 - 002259 - 9/1000 NaCl solution
- 005155 - Cuvettes for photometer
- 005376 - Standard filters for photometers
- 005531 - P200 pipette (50 to 200µl)
- 028877 - Boxes of 96 tips for P20 P200
- 005529 - P5000 pipette (1 to 5ml)
- 005206 - Translucid tips for pipette type P5000

AccuRead bovine photometer

Tool developed especially for accurate measurement of the concentration of ejaculates.

References

- 019956 - Accuread bovine photometer

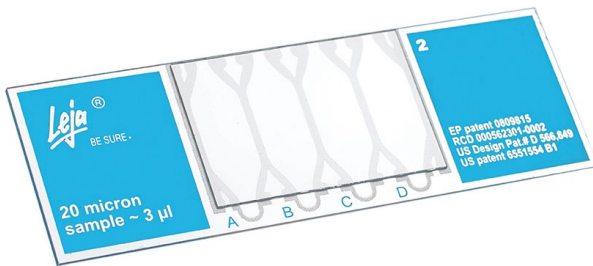


Accessories

- 006452 - Mini pipette for semen sampling
- 023724 - Microlab 600 diluter
- 005531 - P200 pipette (50 to 200µl)
- 028877 - Boxes of 96 tips for P20 P200
- 005529 - P5000 pipette (1 to 5ml)
- 005206 - Translucid tips for pipette type P5000

Leja slide

Leja slides are the most accurate fixed-depth slides on the market. Leja calibrated slides provide the accuracy and precision needed to reliably analyze semen. Leja slides facilitate analyses standardization.



Key benefits

- Ensure fixed-depth chambers: availability of a Certificate of Analysis for each batch number
- High-tech materials and rigorous industrial processes: control of the raw materials used and best process used to ensure reliable analyses
- Reliability: controlled filling of chambers
- Accuracy and reliability of semen analyses
- Standardization of analyses
- Repeatable and objective measures
- Inspection and tracking of raw materials, toxicity checks, depth checks, 18-point visual inspection
- Easy-to-use slides



References

- 025107 - Leja 4 chambers slides
- 025108 - Leja 8 chambers slides
- 025095 - 8 chambers warming stage for IVOS

OptiXcell

Unique liposome-based extender without animal protein, for fresh and frozen bovine semen.

IMV Technologies has developed OptiXcell: the first semen extender based on - synthesized liposomes (without animal protein).

Liposomes are IMV Technologies solution to replace egg yolk.

OptiXcell allows a safe and high quality preparation and preservation of both your fresh and frozen semen doses.



References

- 026218 - OptiXcell 250 mL - QSF 750 mL
- 025239 - OptiXcell CSS (without preservatives)
- 027919 - Kit OptiXcell CSS (with preservatives)

Key benefits

- Clear, particle free media
- Enhanced microscopic and CASA evaluation
- Animal protein free
- High quality extender
- Extended shelf-life
- Optimised for fresh semen
- OptiXcell conserves mobility parameters of fresh semen
- High performance with low numbers of spermatozoa per dose
- Ready to use (just add water)

Related products

- 019757 - Sterile water
- 005299 - Bar magnet
- 005298 - Heating magnetic stirrer
- 020177 - 240 mL Pyrex bottle
- 008325 - Holder for 16 bottles
- 027153 - Complete dilution system
- 023041 - PH meter 720 with Sentix 41 probe
- 005739 - Glass water distiller
- 024931 - 005732 - 005736 - Hot air sterilizer
- 007227 - Water bath
- 005727 - Water bath with lid
- 022375 - 4200 g electronic balance

BioXcell

Animal protein-free, vegetal phospholipid based extender for frozen bovine semen.

References

016218 - BioXcell 250 mL - QSF 1,250 mL
006584 - BioXcell 100 mL - QSF 500 mL
018617 - BioXcell CSS



Key benefits

- Media for frozen (-196°C) or fresh semen (+4°C).
- Good results cold shock spermatozoa resistance tests.
- Bioxcell contains an antibiotic mix of Lincomycin, Spectinomycin, Gentamycin and Tylosin.
- Easy to use, 1 bottle of Bioxcell is diluted in 400 ml of water for a final extended, ready to use volume of 500 ml.
- Due to the absence of egg yolk and/or milk, Bioxcell is clear after dilution. This makes diluted semen easy to evaluate under the microscope or CASA System.

BullXcell

Professional manufactured preparation for semi home-made egg-yolk based extender.

References

022325 - BullXcell



Key benefits

- Secure results: exclusive proven formula In-vitro results
- Optimal protection of the sperm cells: tris buffer. High fertility also at sub-optimal concentration. Safe for low dilution bulls
- Guaranteed stability: 0.22 µm filter-sterile concentrate, tested by an independent laboratory.
- Time-saving compared to fully home-made products

Optidyl

Optidyl is a concentrated sterilized egg yolk based extender for freezing of bull semen doses.

References

020996 - 500 ml Optidyl QSF 1 250 ml



Key benefits

- Good motility results
- Results that are not dependent on the bull
- Ready to use (water added)
- Proven results

30L Water bath

30 L water bath with heating circulator and a stand for baby bottles and tubes.

References

007227 - 30 L water bath



Accessories

008325 - Holder for 16 bottles

020177 - 240 mL Pyrex bottle

Water bath

45 L Stainless steel water bath with lid.

References

005727 - 45L wather bath



Accessories

020177 - 240 mL Pyrex bottle

Stainless steel sterilizer

Stainless steel sterilizer: 30C° to 220C°.

References

- 024931 - 53 L - internal dimensions 400*400*330
- 005732 - 108 L - internal dimensions 560*480*400
- 005736 - 256 L - internal dimensions 800*640*500



Dry water bath

Dry water bath used to keep collected semen at the right temperature in the pass-through window and laboratory.

References

- 024504 - Dry water bath



Smart dilution dispenser

System used to carry out pre-dilutions or final dilutions. Balance controlled accurate peristaltic pump. Automatically slows down and stops at the desired weight whether input manually or automatically from eSMILE. Stand-alone operation or connection to PC for batch dilution.

Key benefits

- Fast and user-friendly
- Compatible with Smile and eSmile
- Durable and autoclavable silicone tubing
- Complete with pump control, pump head, stand, tubing and sinker
- Accuracy to 0.01 to 0.5 gr (2 balance options)
- Flow rate from 0.1 ml to 1000 ml / mn High speed printing

References

- 022375 - Smart Dilution dispenser + Balance 3kg precision 0.1g with Rs232





IRIS Compact

IRIS Compact offers a wide range of printing options, allowing you to print straws and rods with unique field type, barcode, and logos. With IRIS, all laboratories can have access to traceability with a low cost of ownership.



Key benefits

FAST AND RELIABLE

- High speed printing 18,000 straws/hr
- Anti-jamming system

ULTRA-COMPACT INKJET

- No daily cleaning
- Easy to use
- Print easily on:
 - mini straws
 - medium straws
 - identification rods

INTUITIVE AND CONNECTED CONTROL

- Supervision software
- Reliable counting of straws and identification rods
- Compatible with eSmile

References

029470 - IRIS Compact

028763 - Medium Hopper

028766 - Mini Hopper

029140 - Ink Solvent emission aspiration/filtration system



IRIS Standard

IRIS Standard offers a wide range of printing options, allowing you to print straws and rods with unique field type, barcode, and logos. With IRIS, all laboratories can have access to traceability.



Key benefits

FAST AND RELIABLE

- High speed printing
- Anti-jamming system
- No daily cleaning
- Easy to use
- Robust
- Print easily on:
 - mini straws
 - medium straws
 - identification rods

INTUITIVE AND CONNECTED CONTROL

- Supervision software
- Reliable counting of straws and identification rods
- Compatible with eSmile

References

028865 - IRIS Standard

028763 - Medium Hopper

028766 - Mini Hopper

029140 - Ink Solvent emission aspiration/filtration system

029270 - IRIS Configurable

The IRIS system is compatible with Domino printers only.

Printer models that are IRIS system compatible are:

Domino A420i

Domino Ax350i

Domino A200 + with wiring modification

Domino A200 with wiring modification



ISevo alpha Flex

Designed for optimum flexibility and safety, rely on ISevo alpha Flex for the entire semen packaging process, compatible with any type of straw !

Benefit from the alpha mode and its automated plug moisture level control for alpha straw, or turn it off to use any other semen straw.



Key benefits

- Optimum security and reliability
- Time saving: Up to 12,500 straws per hour
- Efficient filling and sealing
- Absorb less semen
- Smart ergonomics to improve user comfort and reaction speed
- Unique traceability and safety system

OPTIMUM FLEXIBILITY

Thanks to the Flex mode, you can now fill and seal any semen straw of any size. With this versatile equipment, you can switch mode quickly and easily to adapt perfectly to the straws of your choice.

PEACE OF MIND

The automatic control of the plug's moisture level of the alpha mode as well as the possibility to display the filling on the remote screen ensures added security for the user. Thanks to its different modes, ISevo alpha Flex allows optimum filling from the first to the last straw.

SMART ERGONOMICS

ISevo alpha Flex is crafted to provide the best levels of safety, comfort, confidence and speed.

Three smart buttons improve user comfort and reaction speed. The equipment's elegant curves make it easy to clean. It is also designed to be easy to take apart.

UNIQUE TRACEABILITY

ISevo alpha Flex is equipped with a unique traceability and safety system.

Both the integrated and non-integrated versions allow to keep record of the straw batch and the operator having used the equipment.

References

- 028420 - ISevo alpha Flex mini - non integrated
- 028422 - ISevo alpha Flex mini - integrated without Jet Printer
- 028424 - ISevo alpha Flex mini - integrated with Jet Printer
- 028421 - ISevo alpha Flex medium - non integrated
- 028423 - ISevo alpha Flex medium - integrated without Jet Printer
- 028425 - ISevo alpha Flex medium - integrated with Jet Printer

Accessories

- 028998 - Mini disposable filling nozzle for ISevo
- 029010 - Mini single disposable filling nozzle
- 025430 - Semen cone
- 005564 - 017484 - 007329 - Flexible tube for semen filling
- 028468 - Premium tightness plug
- 007705 - Medium short suction nozzle
- 007706 - Mini short suction nozzle
- 007703 - Medium long filling nozzle
- 026511 - Mini suction nozzle for alpha straws





ISevo

Designed for laboratories which look for efficiency and simplicity, ISevo is the new generation straw filling equipment.



References

027788 - ISevo mini 220V - non integrated
027790 - ISevo mini 220V - integrated - without Jet Printer
027792 - ISevo mini 220V - integrated - with Jet Printer
027794 - ISevo medium 220V - non integrated
027796 - ISevo medium 220V - integrated - without Jet Printer
027798 - ISevo medium 220V - integrated - with Jet Printer

Key benefits

- Semen saving
- Time saving
- Smart ergonomics
- Easy to clean
- Unique traceability
- Peace of mind
- Available in 110V

Accessories

025430 - Semen cone
005564 - 017484 - 007329 - Flexible tube for semen filling
028468 - Premium tightness plug
007705 - Medium short suction nozzle
007706 - Mini short suction nozzle
007703 - Medium long filling nozzle
025352 - Disposable filling nozzle
026544 - Disposable filling nozzle holder
027838 - Reusable filling nozzle holder



MX4

For laboratories which look for flexibility without cutting back efficiency, MX4 was engineered to fill and seal mini and medium straws at a speed of up to 13,000 straws per hour.



References

023258 - MX4 non integrated

Key benefits

- Variable speed
- Easy operation and maintenance

Accessories

- 007704 - Mini long filling nozzle
- 007703 - Medium long filling nozzle
- 023669 - Mini straw hopper for Genom'X / MX4
- 023667 - Filled straws hopper GENOM'X
- 010240 - Tightness plug
- 005564 - 017484 - 007329 - Flexible tube for semen filling
- 025430 - Semen cone
- 025302 - Mini single disposable filling nozzle
- 019764 - 4 ways mini disposable filling nozzle
- 007705 - Medium short suction nozzle
- 007706 - Mini short suction nozzle
- 024649 - Filing needle holder
- 007705 - Medium short suction nozzle for ISevo, MRS1 dual, MRS4 and IS4
- 007706 - Mini short suction nozzle, compatible with ISevo, MRS1 dual, MRS4, and IS4
- 007703 - Medium long filling nozzle compatible with ISevo, MRS1, MRS4 and IS4
- 007704 - Mini long filling nozzle compatible with MRS1 dual, MRS4, MX4 and IS4

Related products

Top Bull Straws





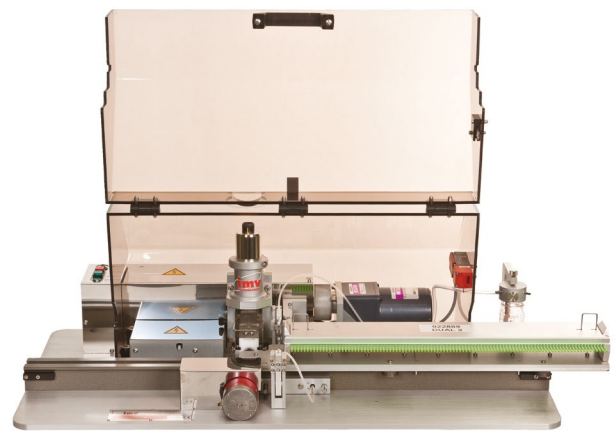
MRS1 Dual

The 1x1 straw filling and sealing machine made for small or mobile laboratories and customized productions.



Key benefits

- Reliable and easy to operate
- Possibility to pre-set the number of straws to fill on the rack
- Automatic transfer of filled straws to the freeze racks
- Fills and seals up to 3,600 straws per hour
- Works both at +4°C and room temperature



References

- 022990 - MRS1 Dual v2 115 V
- 022989 - MRS1 Dual v2 230 V

Related products

Top Bull Straws

- 022887 - 100 mini straws carrier for MRS1 V2
- 022888 - 58 mini straws carrier for MRS1 V2
- 022889 - 100 medium straws carrier for MRS1 V2



Accessories

- 025352 - Mini disposable filling nozzle
- 007704 - Mini long filling nozzle
- 006452 - Medium long filling nozzle compatible with ISevo
- 025302 - Mini single disposable filling nozzle
- 010240 - Tightness plug
- 025430 - Semen cone
- 005564 - 017484 - 007329 - Flexible tube for semen filling
- 007705 - Medium short suction nozzle
- 007706 - 007703 - Mini short suction nozzle
- 022887 - 100 Mini straw carrier for MRS1 V2
- 022889 - 100 Medium straw carrier for MRS1 V2
- 022891 - 40 Medium straw carrier for MRS1 V2



alpha straw

The alpha straw is IMV Technologies latest technology in bovine semen straws. It ensures correct filling of the straw, enhancing the safety of the dose.

Once the straw plug reaches the appropriate level of moisture, the straw plug will fluoresce to indicate that a quality seal has been achieved.

The alpha straw helps to prevent potential losses during thawing. Its colored plug turns fluorescent when correctly moistened, enabling automatic and / or visual control of the plug's moisture level.



Key benefits

- Automatic control of the plug moisture level (when used with ISevo alpha machine)
- Low absorption
- Optional thawing detection (SensiTemp alpha straw)

MORE COMFORT, MORE SECURITY

- When a straw is poorly sealed, it may explode during thawing and becomes thus unusable. The immediate advantage of the alpha straw is to reduce, thanks to a simple visual control, the number of straws potentially compromised during thawing.

GAIN IN PRODUCTIVITY AND RELIABILITY

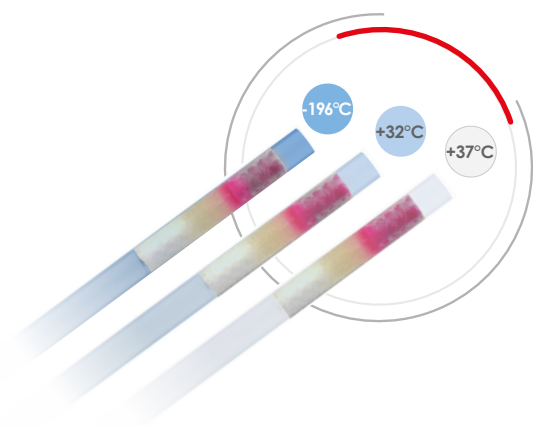
- Used in conjunction with the ISevo alpha filling and sealing machine, the alpha straw allows automatic control of the plug filling. If the machine does not detect fluorescence, it pauses and alerts the user.

LOW ABSORPTION TECHNOLOGY

- The alpha straw, like the TBS straw, allows to save semen. It is available in 9 colors, including the SensiTemp alpha straw (pastel blue). This innovation enhances safety, optimizes productivity and allows centers to produce reliable products.

BEYOND α TECHNOLOGY

- In addition to the alpha technology, the alpha SensiTemp straw is composed of a Smart polymer design to fully change the tube's color when reaching +37°C, which is the optimal thawing temperature for insemination.



References

Mini alpha Straws

- 027826 - Clear
- 027825 - White
- 027822 - Clear red
- 027823 - Pastel Pistachio
- 027827 - Pastel Grey
- 028381 - Pastel Yellow
- 028382 - Pastel Orange
- 028384 - Pastel Blue
- 028287 - SensiTemp Blue

Medium alpha Straws

- 028285 - Clear
- 028286 - White
- 028284 - Pastel Pistachio
- 028493 - Pastel Yellow
- 028496 - Pastel Red
- 028497 - Pastel Grey



TBS straw

The TBS, or Top Bull Straw, was designed for bulls of high genetic merit. Proprietary, low-absorption technology used in this straw reduces the volume of ejaculate lost to the plug during filling.

References

017011 - Clear	019707 - Pink
018299 - White	017014 - Pastel blue
017015 - Pastel grey	028393 - Light blue
017016 - Pastel yellow	021702 - Pastel purple
028392 - Putty	018888 - Pastel pistachio
017017 - Pastel orange	017013 - Pastel green*
026859 - Fluo orange	019709 - Pistachio green
025601 - Pastel salmon	026858 - Fluo green
017012 - Pastel red	

* Non readable bar code



Classic IMV straw

Original straw created by our founder Robert Cassou in 1963, never equaled in terms of reliability.

Exists in mini and medium format.



References

Classic mini straws

005565 - Clear
 005576 - Gray
 005577 - Pastel gray
 005578 - Yellow
 005701 - Light yellow
 005575 - Pastel yellow
 005585 - Putty
 005583 - Orange
 005580 - Pastel orange
 005582 - Salmon
 005567 - Pastel red
 005581 - Pink
 005571 - Red
 005584 - Pastel blue
 005680 - Royal blue*
 005573 - Purple
 019130 - Pastel purple
 019179 - Pastel pistachio
 005570 - Green*

Classic medium straws

005569 - Clear
 005698 - Pastel gray
 005707 - Yellow
 005590 - Pastel yellow
 005711 - Putty
 005685 - Pastel orange
 005715 - Salmon
 005709 - Pastel red
 005712 - Pink
 005702 - Red
 005697 - Pastel blue
 005703 - Purple
 020201 - Pastel pistachio
 005568 - Green*
 005710 - Pastel green*
 005746 - Pistachio green

* Non readable bar code



Vertical Cold Cabinet

This vertical cold cabinet is designed for an easy access thanks to front loading: its ergonomic design improves the user's working comfort.

References

018544 - Vertical cold cabinet



Horizontal Cold Cabinet

The IMV Technologies horizontal cold cabinet is a customized refrigerated workspace for frozen semen straw production laboratories. The worktable can be used to house the straw filling and sealing system, or for the equilibration of straws.

References

028571 - Horizontal cold cabinet 220V/50 Hz Height 2M

028570 - Horizontal cold cabinet 110V/60 Hz Height 2M: US market



Digitcool alpha

Controlled rate Straw freezer designed for a precise and uniform semen straw freezing. The Digitcool alpha human-centered features ease daily operations in laboratories.



Key benefits

- Designed to preserve the integrity of gametes during freezing
- Zero frigor loss and optimized nitrogen consumption
- Aeronautics technology connectors
- Controlled deep freezing
- Enhances your Standard Operating Procedures
- Fully programmable and easy to disinfect



References

029126 - Digitcool alpha

Related products

- 029138 - Starter pack Medium Digitcool alpha
- 029134 - Starter pack Mini Digitcool alpha
- 028480 - Freezing rack for 100 medium straws for Digitcool alpha
- 029132 - Distribution block for 100 medium straws for Digitcool alpha
- 028483 - Freezing rack for 175 mini straws for Digitcool alpha
- 029131 - Distribution block for 175 mini straws for Digitcool alpha
- 029135 - Pack of 1 straw collector + 10 dividers medium
- 029136 - Pack of 1 straw collector + 10 mini divider
- 028959 - UPS Digitcool alpha 1500VA / 1050W
- 020279 - Cryogenics gloves by pair
- 020278 - Safety glasses
- 028551 - 230 L tank with Flexible + Caster + Gauge

HOMOGENEOUS FREEZING

Thermodynamic principles have been meticulously respected to preserve the integrity of the same in every corner of the container.

COMFORT USAGE AND OPERATOR SAFETY

- Hands-free opening of the lid
- Safer for the user
- Eliminates liquid nitrogen-derived injuries

TIME SAVING

- Easy and semi-automated straw alignment within the racks
- Production batch visibility at a glance with the batch separator
- Specially designed straw collector

PEACE OF MIND

Even if you lose electrical power, a UPS battery backup system keeps the Digitcool alpha running long enough to safely perform its freezing cycle

Mini Digitcool

Mini-Digitcool is a more compact version of Digitcool with the same benefits. Mini-Digitcool freezer is used to freeze straws on 24 racks.

References

007263 - Mini-Digitcool



Accessories

026069 - WIN 3T v2 software
007121 - Freezing rack for 100 mini straws
007186 - PC/COM cable
024121 - Straw gathering forceps
020279 - Cryogenics gloves by pair
020278 - Safety glasses

Micro Digitcool

Micro-Digitcool is the smallest digitcool while keeping the same benefits. Micro-Digitcool freezer is used to freeze straws on 6 racks.

References

007261 - Micro-Digitcool



Accessories

026069 - WIN 3T v2 software
007119 - Freezing rack for 40 medium straws
007093 - Distribution block for 40 medium straws
007186 - PC/COM cable
007118 - Freezing rack for 58 medium straws
007092 - Distribution block for 58 straws
020279 - Cryogenics gloves by pair
020278 - Safety glasses



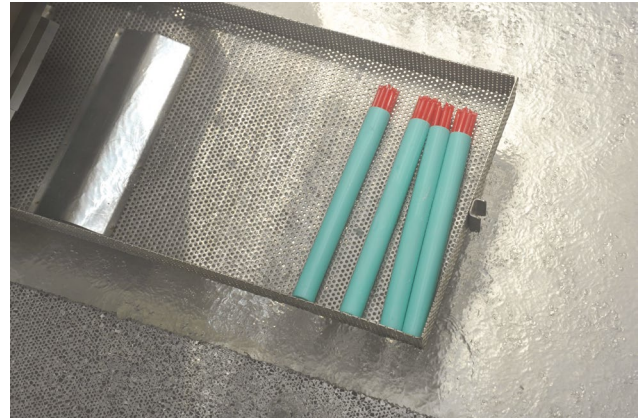
MCA Dual

IMV Technologies automatic counting and packaging machine automatically counts and packages frozen straws in visotubes, while keeping them at -196°C thanks to its dedicated mobile host tank.



Key benefits

- Safety: avoids damaging straws during packaging
- Increases productivity: more than 90 straws per minute
- Ease of use: only 3 switches
- Reliability: built with materials that can withstand extreme cold cycles



References

- 015763 - Automatic counting machine - MCA for mini straws /115V
- 015691 - Automatic counting machine - MCA for mini straws /230V
- 015764 - Automatic counting machine - MCA for medium straws /115V
- 015760 - Automatic counting machine - MCA for medium straws /230V

Accessories

- 007114 - Conversion kit for automatic counting machine for medium straws
- 007115 - Conversion kit for automatic counting machine for medium straws

- Equipment for 65mm goblet
- Equipment for 35mm goblet
- Equipment for 13mm visotube
- Equipment for 12mm visotube
- Equipment for 10mm visotube
- Equipment for 9.2mm visotube
- Equipment for 7.1mm visotube
- Equipment for hexagonal visotube

Related products

- 022512 - MCA CUV
- 020278 - Pair of protective glasses



MCA CUV

The MCA CUV liquid nitrogen vapor freezing unit was specially designed for the freezing of straws over liquid nitrogen vapor.

The system also can be used as a holding tank for the MCA (automated goblet packaging) and MCM (manual goblet packaging) machines.

The CUV is supplied with an adjustable, mobile table or lift.



References

022512 - Vapor freezing unit and MCA/MCM holding tank

Accessories

025679 - Lifting table

007120 - Freezing rack for 175 mini straws

007089 - Distribution block for 175 mini straws

007117 - Freezing rack for 100 medium straws

007091 - Distribution block for 100 medium straws

016393 - Two-way numerical temperature controller



MCM

The MCM is a manual counting machine designed to package and count frozen straws in visotubes.

This equipment is specially designed to divide small batches of straws in visotubes.

References

007098 - Manual counting machine - MCM For visotubes diameter 10 mm (10 mini straws or 5 medium straws)

007095 - Manual counting machine - MCM For visotubes diameter 13 mm (25 mini straws or 10 medium straws)



Accessories

007826 - 010998 - 010975 - Counting slide for MCM

LN2 Container

Different types of LN2 containers are available to fit all your needs.

Your choice of container mainly depends on the number of straws that you will need to store.

References

017411 - Container 3 liters - 6 canisters - 1 level

005213 - Container 9 liters - 6 canisters - 1 level

005219 - Container 21 liters - 6 canisters - 2 levels

005214 - Container 26 liters - 9 canisters - 2 levels

005227 - Container 35 liters - 6 canisters - 2 levels

015570 - Container 38 liters - 10 canisters - 2 levels

005228 - Container 40 liters - 10 canisters - 2 levels

024505 - Container Arpege 75 liters - 21 canisters - 4 levels

028832 - Container 420 liters wide opening- 110 canisters - 4 levels





Visotubes

Hexagonal visotubes have an original shape which can fit into our 35 mm and 65 mm goblets.

1 hexagonal visotube can contain 80 mini straws or 36 medium straws.

7 hexagonal visotubes can be inserted into a 65 mm goblet

Polygonal visotube are designed to fit perfectly the shape of our 65 mm and 35 mm goblets.

1 polygonal visotube can contain 30 mini straws or 15 medium straws.

15 polygonal visotubes can be put into a 65 mm goblet, and 4 can be put into a 35 mm goblet.

Round visotube

The 10 mm visotube can hold up to 12 mini straws or 5 medium straws.

Eight 10 mm visotubes can be put into a 35 mm goblet.



References

Hexagonal visotubes

006875 - White
006338 - Red
006394 - Green
006409 - Blue
006414 - Yellow
006405 - Orange

Polygonal visotubes

006401 - White
006619 - Orange
006620 - Blue
006622 - Red
006623 - Green
006624 - Yellow



Round visotubes

7.1 mm	9.2 mm	10 mm	12 mm	13 mm
006658 - White	006421 - White	005561 - White	006677 - White	006420 - White
006441 - Red	006390 - Green	006422 - Blue	006695 - Yellow	006404 - Red
006659 - Green	006400 - Blue	006402 - Yellow	006683 - Orange	006413 - Green
006399 - Blue	006423 - Yellow	006673 - Orange	006408 - Red	006395 - Blue
006412 - Yellow	006667 - Orange	006672 - Pistachio	006679 - Green	006411 - Yellow
006662 - Orange	006668 - Red	006403 - Pink	006678 - Blue	006689 - Orange
006661 - Purple		006392 - Red		
006407 - Pistachio		006406 - Green		



Canisters flags

Identifiers and flags can be seen easily from above the tank and are generally used to identify goblets.

References

007328 - White	015697 - Turquoise
015693 - Yellow	015698 - Orange
015694 - Salmon	015699 - Violet
015695 - Pink	015700 - Red
015696 - Dark green	015706 - Gray



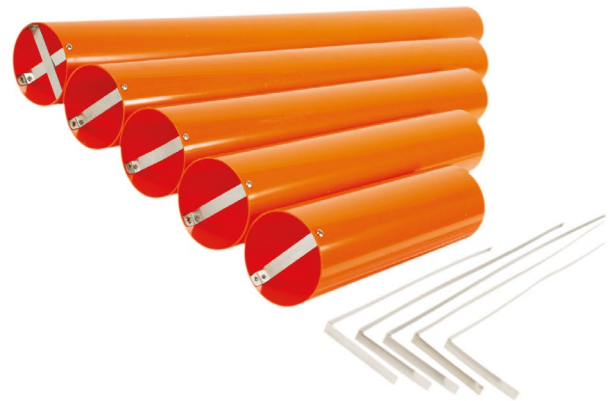
Canisters

Canisters are designed to hold goblets in the LN2 tank.

Different heights of canisters are available, with a capacity of between 2 and 6 goblets.

References

018342 - 2-level canister
018341 - 3-level canister
018340 - 4-level canister
018339 - 5-level canister
018127 - 6-level canister



Related products

026924 - Short forceps length 23 cm
026925 - Long forceps length 110 cm



CITO Thawer

Cito thawer used to thaw straws at the ideal temperature, without damaging them.

References

026897 - CITO thawer 12/220V



Accessories

- 018255 - Thermometer for CITO thawer -
- 005940 - Holder for 20 tubes ø 20 mm
- 026923 - Tweezers for technician length 14 cm
- 005727 - Water bath with lid
- 020111 - Sterile 10 mL tubes
- 005233 - Straw cutter



KOMBICOLOR

Kombicolor is a durable stainless steel bovine semen applicator, which can be used with both mini and medium straws. The added ridge eliminates the need for O-rings and ensures a tight connection with unsplit sheaths. Five colors are available for easy differentiation.



References

- | | |
|-----------------|---------------|
| 018396 - White | 018399 - Blue |
| 018397 - Yellow | 018400 - Red |
| 018398 - Green | |

Key benefits

- High security insemination
- Animal well-being
- Time saving

Related products

- 024485 - alpha sheath
- 029990 - Bovine unsplit universal sheath box of 5000
- 029994 - Bovine split universal sheath box of 5000
- 006323 - Sheath container
- 006322 - Syringe container
- 027923 - 026358 - 024199 - 027924 - GIA glove
- 026066 - Green Air glove
- 023917 - B-lube
- 005233 - Manual straw-cutter
- 005563 - 006459 - Roll of sanitary sheaths

Flexia

The Flexia is a versatile semen applicator for bovines, compatible with mini and medium straws and which can be used with split and unsplit sheaths.

References

- 020267 - Flexia



Top Bull Sheath Applicator

Top Bull Sheath Applicator : A specialized applicator for exclusive use with the Top Bull Sheath and mini straws

References

- 028409 - Top Bull Sheath Applicator





alpha Sheath

With its specific dome head, the alpha sheath passes smoothly into the cervix and through the cervical folds. Its dual-lateral delivery improves hygiene.



References

024485 - alpha sheath

Key benefits

- High security insemination
- Animal well-being
- Time saving
- Optimized for Kombicolor applicator
- For mini and medium straws
- Facilitates optimum placement
- Better straw fit, no backflow
- Crystalline plastic
- Easy reading of straw printing, even through head dual-lateral delivery
- Improves hygiene
- Transparent head makes fluids easy to see upon withdrawal
- Improved connection, prevents separation from the gun

Related products

- 018396 - 018397 - 018398 - 018399 - 018400 - Kombicolor
- 005563 - 006459 - Roll of sanitary sheaths
- 006322 - Syringe container
- 006323 - Sheath container
- 027923 - 026358 - 024199 - 027924 - GIA glove
- 026066 - Green Air glove
- 023917 - B-lube
- 005233 - Manual straw-cutter

Top Bull Sheath

A specialized sheath for use with mini straws. Featuring a reduced diameter, optimized tip design, and a perfect fit between the sheath, straw, and applicator, the TBS sheath brings heightened precision to insemination.

References

028215 - Top Bull Sheath





Universal split sheaths

Perfectly tight fit with mini and medium straws. Transparent sheath and plug allows you to control the information on the straw, the split sheaths have a green adapter.



Reference

029994 - Bovine split universal sheath box of 5000 (by pallet of 180 000).

Accessories

- 020267 - Flexia
- 005563 - 006459 - Roll of sanitary sheaths
- 006323 - Sheath container
- 010579 - Plastic insemination box
- 026923 - Tweezers for technician length 14 cm
- 027923 - 026358 - 024199 - 027924 - GIA glove
- 023917 - B-lube
- 026066 - Green Air glove



Universal unsplit sheaths

Perfectly tight fit with mini and medium straws. Transparent sheath and plug allows you to control the information on the straw, the unsplit sheath has a blue adapter.



Reference

029990 - Bovine universal unsplit sheaths box of 5000 (pallet of 180 000).

Accessories

- 020267 - Kombicolor
- 005563 - 006459 - Roll of sanitary sheaths
- 006323 - Sheath container
- 010579 - Plastic insemination box
- 026923 - Tweezers for technician length 14 cm
- 027923 - 026358 - 024199 - 027924 - GIA glove
- 023917 - B-lube
- 026066 - Green Air glove



Easi-Scan:Go Range

Fast, light and with minimal set-up time required, the Easi-Scan:Go is ready to go when you are, providing speedy results without sacrificing accuracy. Biosecurity is not an issue as the scanner is waterproof and completely sealed. This contributes to an even more efficient workflow on the farm.



References

ESG-SCANNER-L – Easi-Scan:Go Linear

ESG-SCANNER -C – Easi-Scan:Go Curve

ESG-LITE-SCANNER-L – Easi-Scan:Go Lite Linear

ESG-LITE-SCANNER-C – Easi-Scan:Go Lite Curve

Key benefits

Easi-Scan:Go Linear and Curve

- Fully sealed unit ensuring waterproof to IP67 standard
- Exceptional image quality allowing for full fertility examinations as well as non-reproductive applications such as teat scanning, lung scanning, uterine scanning, post-calving examinations and body condition assessment
- Connection with Farm Management systems to allow full picture of cow health displayed on the ultrasound image. KPI detail such as age, last inseminated, milk yield can all be visible for each individual cow. (restrictions apply)
- Connect up to 3 smart devices or BUG:Go to view the image simultaneously
- Weighs only 850 grams and can be securely attached to a belt
- Images and clips saved directly on your phone or tablet

Applications

- Abdominal
- Gynecologic

Related features

CFM (Colour Flow Mapping) exclusive to Easi-Scan:Go

- Negative pregnancy diagnosis between 18 and 23 days post AI
- Foetus viability confirmation (heart – cotyledons)
- Recipients cows for embryo transfer purpose

BovIntel

Ultrasound reimagined. Bringing fertility into focus for conception rate success. The future starts here.



Key benefits

Our revolutionary new technology takes fertility scanning to the next level to improve dairy herd performance.

As you scan it will automatically

- **Identify** the ovary, Corpus Luteum and follicle on an ultrasound image
- Highlight and label them **in colour** on your tablet or BUG:Go screen
- Take and display precise **measurements** – to the nearest mm
- All without interrupting your workflow, in fact, it could speed up the scanning process **by up to 3 times**
- Exclusive to the Easi-Scan:Go



ExaPad range

Our full ExaPad range is designed with the mixed practice vet in mind suitable for both routine work and advanced applications.



Key benefits

ExaPad

Seamlessly switch between applications with 2 probe connectors

- Large imaging viewing area
- Excellent image quality with 192 element probes available for high quality diagnostics

ExaPad Mini

- Suitable for in practice or in field use
- Excellent imaging for OPU application
- Software integrations with MeatQText and EcoText

ExaPad Micro

- Compact and portable scanner
- Purposely designed accessories to support you in any use-case
- Ruggedised machine with magnesium casing and veterinary tested probes

Applications

- Abdominal
- Musculoskeletal
- Gynecologic
- OPU

Related features

Teamviewer: Equipped with Teamviewer to allow for remote support on the device. Allowing you to have access to technical and clinical experts should you have any difficulty whilst imaging

CFM (Colour Flow Mapping) for:

- Negative pregnancy diagnosis between 18 and 23 days post AI
- Foetus viability confirmation (heart – cotyledons)
- Recipients cows for embryo transfer purpose

Compatibility software: (for ExaPad and ExaPad Mini)

- ECOTEXT: tool to predict young bulls' fertility
- MEATQTEXT: to assess meat quality on live animals

References

90-3346KIT - ExaPad Veterinary ultrasound scanner

90-2440KIT - ExaPad Mini veterinary ultrasound scanner

903188 - ExaPad Micro veterinary ultrasound scanner



ExaPad range

Probe compatibility

Product	ExaPad	Mini	Micro
 LR760V - Linear Rectal	X	X	X
 CRV460V - Curved rectal probe	X	X	X
 L738V- Linear Tendon	X	X	X
 C360S - Convex	X	X	X
 L3180B - Bovine Backfat	X	X	X
 OPU E610B - OPU, thin probe	X	X	X
 OPU E614B - OPU, thicker probe	X	X	X
 C614P - Micro-convex probe	X	X	X
 P320R - Phased array probe	X	X	
 P713R - Phased array probe	X	X	
 CC717B - Micro-convex probe	X		
 CC550V - Convex probe	X		
 LC1038V - Linear probe	X		
 LC1428V - Linear probe	X		

Specifications

	ExaPad	ExaPad Mini	ExaPad Micro
Console form	Touchscreen		
Probe connectors	2	1	1
Screen size	14 inches	12 inches	10 inches
Optional trolley	Yes	Yes	No
Battery life	60 mins	90 mins	90 mins
Optional external charger	No	No	Yes
Built in stand	Yes	Yes	No
Optional stand	No	No	Yes
Weight	6kg	4kg	2kg
Height	300mm	250mm	200mm
Width	390mm	320mm	280mm
Depth	70mm	58mm	55mm
Warranty	2 years		
Colour Doppler	Yes	Yes	Yes
Pulse wave doppler	Yes	Yes	Yes
Continuous wave doppler	Yes	Yes	No
ECG	Yes	No	No



Polytactyl Mitt



Artificial insemination mitt for carrying out bovine inseminations. Cost-effective, the shape of this polyethylene muff makes insemination easy and risk-free. It has been used for more than 50 years throughout Europe.

Thickness 28µ

References

028498 - Polytactyl Mitt



Green Air



The Green Air Glove has the Ok Compost Industrial certification, ultra-breathable glove.

Thickness 21µ

References

026066 - Green Air glove



GIA



Specially designed for artificial inseminations and examinations.

Thickness 24µ

References

- 027923 - Size S - Length 920 mm
- 026358 - Size M - Length 1000 mm
- 024199 - Size L - Length 920 mm
- 027924 - Size XL - Length 1000 mm





Polyver



This glove is the thickest in the Polysem line. Ideal for long, difficult procedures, such as dystocia and embryotomies. It offers the highest level of resistance against tearing and limits odors.

Thickness 36 μ

Green color

References

024256 - Polyver



Special Delivrance



Specially designed for calving, foaling, birth, and examinations. This comfortable polyethylene glove is suitable for daily procedures. It offers good value for the money.

Thickness 31 μ

Brown color

References

024222 - Delivrance





Calving gown

With its long fitted sleeves and back cutouts, this gown is designed to be very strong and offer good protection. Available in two lengths.

References

Green:	Clear:
024265 - 140cm	025588 - 140cm
024253 - 155cm	025586 - 155cm



Overboot

Polyethylene overboots with 43x53 cm double elastics for heavy-duty use.

References

024242 - Overboot





Training

Our field Application specialists and scientists will train your team members on the different process of the laboratory to ensure that the final product will be of high quality. We offer essential and advanced training in one to two-days format, either at your facilities or at IMV Technologies offices.

References

- 026346 - R&D training installation IVOS II and CEROS II 2 days
- 026347 - R&D training installation IVOS viadent and ident 3 days
- 026348 - R&D installation and training (2days) EasyCyte plus and mini
- 024101 - R&D bovine on site reproduction workshop
- 024102 - R&D bovine semen processing workshop
- 026846 - In vitro bovine embryo production

Support

We understand that the intensive nature of our 1 to 3-days training sessions can be overwhelming. To ensure your confidence and seamless implementation, we offer continuous support following the installation and training. This service can be done remotely.

References

- 025093 - Technical support (EasyCyte per day)
- 028839 - R&D training 1h remote technical support
- 026349 - R&D technical support EasyCyte/IVOS II/CEROS II per day

Our training offer

IMV Technologies provides biological trainings, specific ready-to-use standard protocols and global approach to understand each step of the process of a cryolab. We bring tailored training programs to meet your needs in Reproductive Biotechnologies. Emphasizing a hands-on approach with practical exercises, we complement theoretical principles for optimal use of our products, extending our focus to provide personalized guidance. Our data-driven support beyond training helps you in overcoming challenges for your desired outcomes.

Equipment installations: biological and technical expertise

Our team composed of experts, PhD or vets will install your equipments that require biological expertise such as semen analysers (CASA, cytometer) or ultrasound scanners. Two main formats with several trainings per species are available.

Essential (One-day format)

Advanced (2-days+ format)



Number of trainings subjects



Contact us: academy@imv-technologies.com

More details: www.imv-technologies.com/training-programs



Since 1963, IMV Technologies has been manufacturing its own equipment and controlling over the entire process, encompassing design, installation, maintenance, and the machine's lifecycle until its retirement.



Equipment installations

Our team of experts will install your new equipment and ensure it is tailored to your needs, maximising efficiency.



Equipment training

After installing your equipment, our service technicians will train your team and ensure they know how to get the most out of the product. Each training is adapted to customer needs.

We offer three types of training:

- Onsite equipment training
- Equipment training for customers at the IMV Technologies corporate offices
- Remote training



After sales support

IMV Technologies' equipment is designed to last. To ensure the equipment always operates with optimal efficiency, we offer both preventive and corrective maintenance as well as maintenance contracts.

In the unlikely event of a breakdown, we offer three types of service:

- Telephone / Remote support
- Onsite repairs
- Product is returned to one of our service centers

Service Contracts

	EXPERT CONTRACT	PREMIUM CONTRACT
Preventive Maintenance Kit	X	X
Preventive Labor	X	X
Preventive technician's travel time	X	X
Hotline Free telephone assistance	X	X
Hotline Call priority	X	X
Software Upgrade	X	X
Spare parts (Corrective Maintenance)	50% Included	X
Labor (Corrective Maintenance)		X
Public holliday assistance		X
Technical training during Preventive Maintenance		2 hours*

*Excluding application training, please contact us for more information.

More details:
www.imv-technologies.com/customer-service

NOTES





IMV TECHNOLOGIES. FOR LIFE.



IMV Technologies subsidiaries

• IMV Technologies distributors

◉ IMV Technologies representative office

France HQ

📍 IMV Technologies
ZI n°1 Est
61300 L'Aigle

☎ +33 2 33 34 64 64

✉ contact@imv-technologies.com

🏠 www.imv-technologies.com

North America

📍 IMV technologies USA
9501 Louisiana Ave N, Suite 300
Brooklyn Park, MN 55445

☎ +1 763 488 1881

✉ contact@imvusa.com

🏠 www.imv-technologies.com

Brazil

📍 IMV Technologies Brazil
R. Vitoriano dos Anjos, 1081
13041-317 Campinas-SP

☎ +55 (19) 2513-3444

✉ contato@imvbrasil.com.br

🏠 www.imv-technologies.com

China

📍 IMV Technologies China
Room 510, Building 1,
NO.800, Naxian Road,
Pudong District, Shanghai,
201203 China

☎ +86 21 50586918 or 50586948

✉ www.imvchina.com

🏠 contact@imvchina.com

India

📍 IMV Technologies India
(IMV India Pvt. Ltd.)
Plot No 750 Phase V, Udyog Vihar
Girgaon 122016 (Haryana)

☎ +91 124 4770707

✉ www.imvindia.com

🏠 contact@imvindia.com

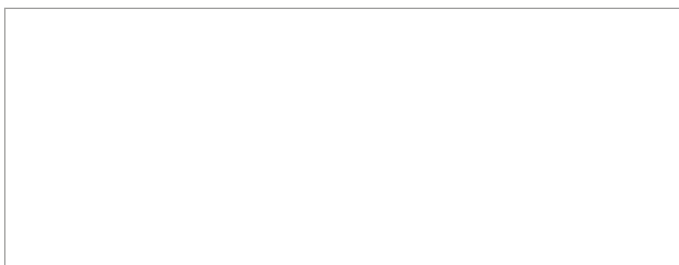
The Netherlands

📍 Nifa Technologies
Pallasweg 22
8938 AS Leeuwarden

☎ +31 58 2123279

✉ www.nifa.nl

🏠 info@nifa.nl



www.imv-technologies.com